

# THE EXTERIOR SOLUTION FOR Color.



## CEDAR DISCOVERY® PROFILE AND COLOR KEY

Due to printing limitations, colors may not be exactly as shown. Refer to actual sample and color chips for best match.

**HS** HAND-SPLIT SHAKE

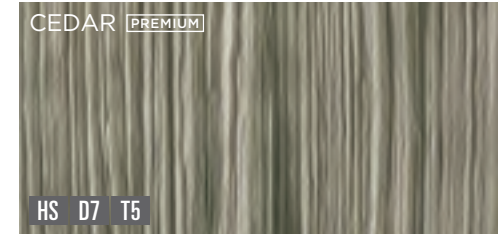
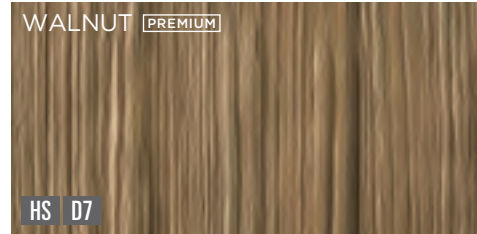
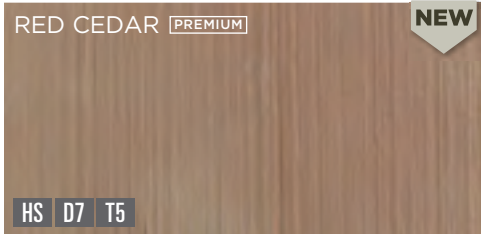
**HR** HALF-ROUND

**D7** PERFECTION SHINGLE D7"

**T5** PERFECTION SHINGLE T5"

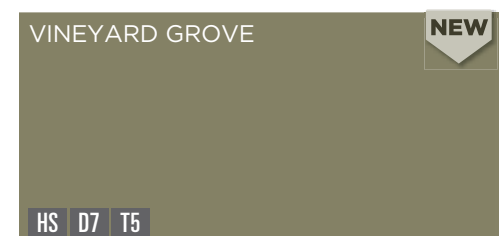
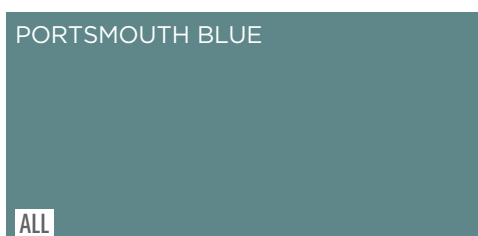
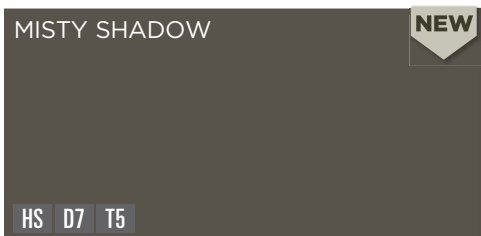
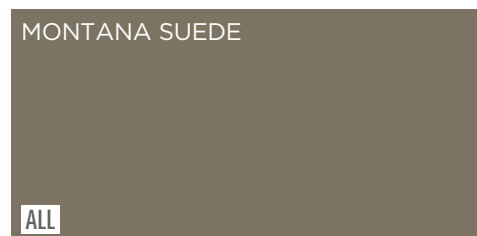
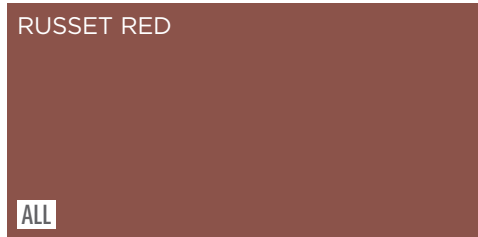
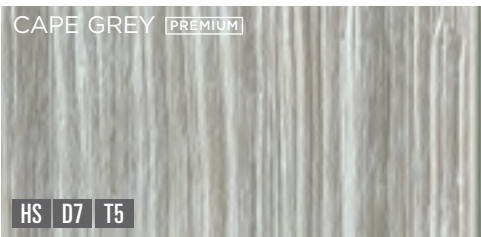
**ALL** ALL PROFILES

**Weathered Cedar Colors** — Subtle shading and variations in color recreate the look of naturally weathered cedar.



**Solid Cedar Colors** — The look of freshly painted cedar shakes.

### DEEP COLORS >



**DEEP COLORS (CONTINUED) >**

AUTUMN HARVEST

**NEW**

HS D7 T5

CORN SILK

**NEW**

HS D7 T5

SCOTTISH THISTLE

ALL

PEBBLESTONE CLAY

ALL

WICKER

ALL

SANDTONE

ALL

SILVER GREY

ALL

ALMOND

ALL

CAMEO

ALL

COLONIAL YELLOW

ALL

**CLASSIC COLORS >**

HARBOR GREY

ALL

EVEREST

ALL

**LIGHT COLORS >**

VICTORIAN GREY

ALL

TUSCAN OLIVE

ALL

SAGE

ALL

DESERT SAND

ALL

CLASSIC CREAM

ALL

LINEN

ALL

WHITE

ALL



**Explore the possibilities.**  
With our visualizer tool, you can apply different combinations of colors and products to see how they look. Bring your vision to life at [mastic.com/getstarted](http://mastic.com/getstarted).

# Beauty that lasts a lifetime.

## COLORS AND STYLES TO PLEASE EVEN THE MOST PARTICULAR EYE.

### HAND-SPLIT SHAKE

Deep, random grooves replicate the rustic look and texture of real cedar shakes.

### WEATHERED CEDAR COLLECTION

Subtle shading and variations in color recreate the look of naturally weathered cedar.

### SOLID CEDAR COLORS

The look of freshly painted cedar shakes.

### PERFECTION SHINGLE

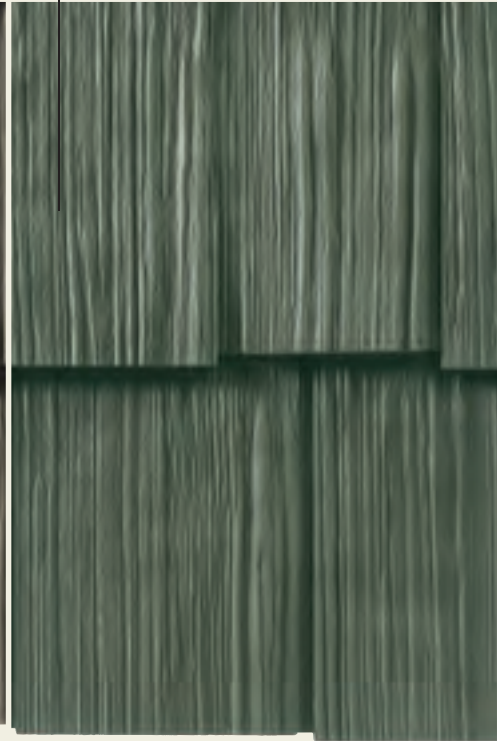
Random gaps and refreshed, realistic rough cedar-grain texture replicate the appearance of real cedar shingles.

### WEATHERED CEDAR COLLECTION

Subtle shading and variations in color recreate the look of naturally weathered cedar.

### SOLID CEDAR COLORS

The look of freshly painted cedar shakes.



### BREATHE EASY

Unlike some fiber cement products, vinyl siding does not produce harmful silica dust — silica dust can cause lung disease.



**OIL CAN TEST** Siding panels are placed under heat strips and saturated to 120° — 140°F to make sure the siding doesn't warp or buckle.



**GLOSS TEST** A digital readout microgloss meter is used to scan siding to determine if its gloss falls within a target range. Gloss is important to the aesthetic appeal of the siding.

Backed by Mastic's V.I.P.  
Limited Lifetime Warranty. See warranty for complete details.